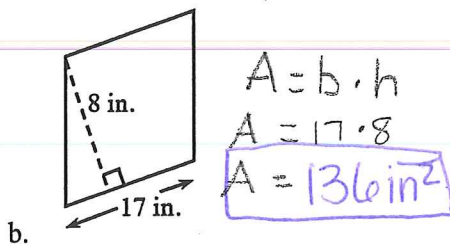
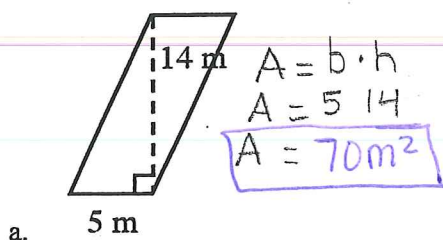
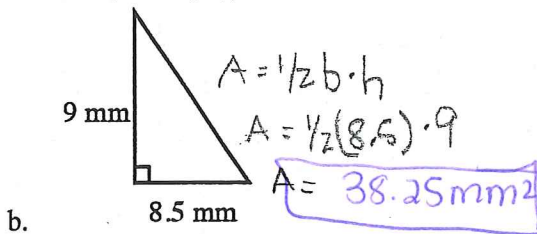
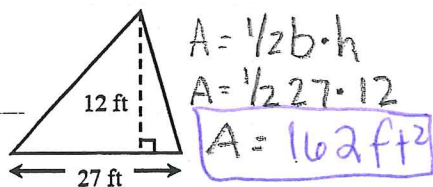


Review & Preview

- 5-91. Find the area of each parallelogram below. Show all your work. Use the Math Notes box in this lesson if you need help. Homework Help (Formula, plug in, answer, label)



- 5-92. Find the area of the following triangles. Show all your work. Homework Help Formula, plug-in, Answer label



- 5-93. Graph the trapezoid $A(6, 5)$, $B(8, -2)$, $C(-4, -2)$, $D(-2, 5)$. Homework Help Do this on the back of the paper. Answer all 3 parts.

a. Find the length of the bottom base (segment CB). $\overline{CB} = 13 \text{ units}$ b. Then find the length of the top base (segment AD). $\overline{AD} = 8 \text{ units}$ c. Find the distance between the two bases, which is called the height. Use grid units. $\text{Height} = 7 \text{ units}$ *Look on back*

- 5-94. The first four multiples of 7 are 7, 14, 21, and 28. Use this example to help you as you answer the questions below. Homework Help

- a. What are the first six multiples of 9? 9, 18, 27, 36, 45, 54
- b. What are the first six multiples of 12? 12, 24, 36, 48, 60, 72
- c. What is the least common multiple of both 9 and 12? 36
- d. What is the greatest common factor of both 9 and 12? 3
- Handwritten work for d: 1, 3, 9 and 1, 2, 3, 4, 6, 12 with 3 circled as the GCF.*

5-95. Draw a number line. Then draw and label a dot to show the position of each of the following numbers. Homework Help

- a. 2.5
- b. $\frac{1}{2}$
- c. -2
- d. 0.5
- e. $-1\frac{1}{2}$
- ~~f. 1~~
- f. $-\frac{3}{4}$

